

mod. GMDM

Getto multiplo
quadrante asciutto
Multi jet-super dry



mod. GMDX 90°C



Disponibile versione
acqua calda 30-90°C
Available version
for hot water 30-90°C

MID 2004/22CE

Mod. GMDM

Getto multiplo, quadrante asciutto, lettura diretta. Realizzato nella versione per acqua fredda (30°C) nei calibri da \varnothing 15 a 50 mm (1/2" \div 2"). Esclusi rischi di corrosione e sedimentazione. Dispositivo antimagnetico a richiesta. Garanzia di lunga durata ed elevata precisione. **Contatore omologato a norme MID fino a R160H.**

Mod. GMDM

Vielfachwasserstrahl, trockenes Zifferblatt, Direktablesung. Produziert in den Versionen Kaltwasser (30°C) in den Durchmessern von 15 bis 50 mm (1/2 Zoll \div 2 Zoll). Die Risiken von Rost und Ablagerungen sind ausgeschlossen. Antimagnetische Vorrichtung auf Anfrage. Garantiert lange Haltbarkeit und erhöhte Genauigkeit. **Zugelassener Zähler für MID Standards bis zu R160H.**

Mod. GMDM

Multi jet, dry dial, direct reading. Made in the version for cold water (30°C) in the diameters 15 to 50 mm (1/2" \div 2"). Risks of corrosion and sedimentation free. Antimagnetic protection upon request. Long durability and elevated precision guaranteed. **Approved according to MID standards up to R160H.**

Mod. GMDM

Jets multiples, cadran sec à lecture directe, disponible en la version pour eau froide (30°C) et du calibre 15 au calibre 50 mm (de 1/2" à 2"), exclus tous problèmes de corrosion et d'incrustation, équipé d'une protection antimagnétique sur demande, fiabilité dans le temps et précision élevée. **Approuvé selon les normes de MID jusqu'à R160H.**

Mod. GMDM

Chorro múltiple, esfera seca, lectura directa. Fabricado en la versión para agua fría (30°C) en los calibres de \varnothing 15 a 50 mm (1/2" \div 2"). Libre de riesgos de corrosión y sedimentación. Bajo pedido se suministra con dispositivo antimagnético. Garantía de larga duración y elevada precisión. **Contador homologado por las normas MID hasta R160.**

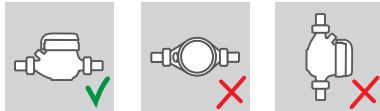
Мод. GMDM

Многоструйный счетчик с сухим квадрантом и прямым считыванием. Выпускается в версии для холодной (30°C) воды диаметрами условного прохода от 15 до 50 мм (1/2" - 2"). Исключены риски коррозии и образования осадка. Антимангнитная защита - по запросу. Гарантия долговечности и высокой точности. **Сертифицирован по стандартам MID R160H.**

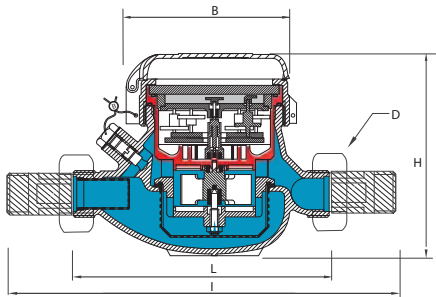
Caratteristiche tecniche - Technical features

Calibro Size	DN	mm in	15 (1/2")	20 (3/4")	25 (1")	32 (1 1/4")	40 (1 1/2")	50 (2")
Portata di sovraccarico Overload flow rate	Q ₄	m ³ /h	3,125	5	7,875	12,5	20	31,25
Portata permanente Permanent flow rate	Q ₃	m ³ /h	2,5	4	6,3	10	16	25
R = 100 H	Portata di transizione Transitional flow rate	l/h	40	64	100,8	160	256	400
	Portata minima Min flow rate	l/h	25	40	63	100	160	250
R = 160 H	Portata di transizione Transitional flow rate	l/h	25	40	63	100	160	250
	Portata minima Min flow rate	l/h	15,63	25	39,38	62,5	100	156,25
Sensibilità Sensitivity		l/h	6	6	10	10	20	20
Lettura minima Min reading		l	0,05	0,05	0,05	0,05	0,05	0,05
Lettura massima Max reading		m ³	99.999	99.999	99.999	99.999	999.999	999.999
Pressione max ammissibile Max admissible pressure MAP		bar	16	16	16	16	16	16

Posizione d'installazione Installation position



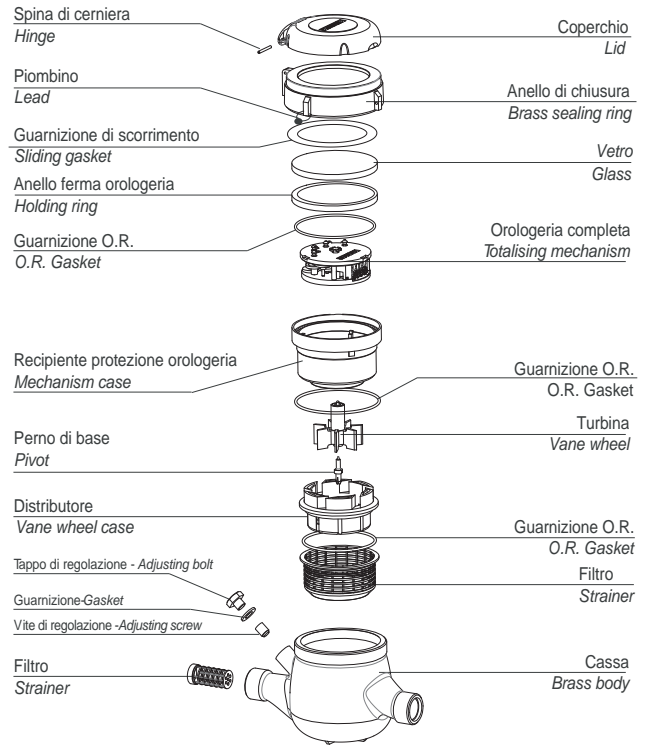
Dimensioni e pesi - Dimensions and Weights



Calibro Size	mm in	15 (1/2")	20 (3/4")	25 (1")	32 (1 1/4")	40 (1 1/2")	50 (2")
L	mm	145-165-190	190	260	260	300	300
l	mm	225-245-270	290	360	380	440	460
H	mm	109	111	117	117	153	172
B	mm	100	100	104	104	126	160
D Filettatura Threading	mm	3/4"	1"	1"1/4"	1"1/2"	2"	2"1/2"
Pesi Weight	kg	1,35	1,45	2,04	2,11	4,58	7,25

Filettatura - Threading EN ISO 228-1:2000

I contatori DN 50 possono essere forniti flangiati secondo ISO 7005-2 / EN 1092-2 PN16
The DN50 meters can be supplied flanged according to ISO 7005-2 / EN 1092-2 PN16



Versione base - Basic version

- MID R100-H 2004/22/CE
- Disponibile in versione per acqua fredda 0°C-30°C e per acqua calda 30°C-90°C omologata MID R50 2004/22/CE
- Trasmissione magnetica
- Lettura diretta su 5 rulli numeratori (6 rulli numeratori su DN40 e DN50)
- Quadrante asciutto
- Con coperchio
- MID R100-H 2004/22/CE
- Available for cold water 0°C-30°C and for hot water 30°C-90°C MID R50 2004/22/CE approved
- Magnetic transmission
- Direct reading on 5 numeric rolls (6 numeric rolls on DN40 and DN50)
- Dry dial
- With lid

Su richiesta - Upon request

- MID R160-H 2004/22/CE
- Predisposizione per montaggio sistema lancia-impulsi
- Equipaggiato con sistema lancia-impulsi
- Protezione anti frode magnetica
- MID R160-H 2004/22/CE
- Prearrangement for pulse emitter device mounting
- Equipped with pulse emitter device
- Anti-magnetic fraud protection



pag 54-55

Dettagli tecnici del sistema lancia impulsi
Technical details about the pulse emitter device



pag 57-63

Dettagli sull' interfacciamento con il sistema M-Bus cablato e wireless
Technical details about the interfacing with the M-Bus wired and wireless system