



Disponibile versione
acqua calda 30-90°C
Available version
for hot water 30-90°C

Mod. GSD8

Getto singolo, quadrante asciutto, lettura diretta su 8 rulli numeratori. Realizzato nelle versioni per acqua fredda (30°C) e calda (90°C) nei calibri \varnothing 15 e 20 mm (1/2" e 3/4"). Quadrante orientabile a 360°. Esclusi rischi di corrosione e sedimentazione. Garanzia di lunga durata ed elevata precisione.

Mod. GSD8

Single jet, dry dial, direct reading on 8 numerical rolls. Produced in the versions for cold water (30°C) and hot water (90°C) in the diameters 15 and 20 mm (1/2" - 3/4"). 360° rotating dial. Risks of corrosion and sedimentation are excluded. Long durability and elevated precision guaranteed.

Mod. GSD8

Chorro único, esfera seca, lectura directa sobre 8 rodillos numerados. Construido en las versiones para agua fría (30°C) y caliente (90°C) en los calibres \varnothing 15 y 20 mm (1/2" y 3/4"). Cuadro orientable a 360°. Excluidos los riesgos de corrosión y sedimentación. Garantía de larga duración y elevada precisión.

Mod. GSD8

Einzelwasserstrahl, trockenes Zifferblatt, Direktablesung auf 8 Zahlrollen. Produziert in den Versionen Kaltwasser (30°C) und Warmwasser (90°C) in den Durchmessern 15 und 20 mm (1/2 Zoll- 3/4 Zoll). Um 360 Grad schwenkbares Zifferblatt. Die Risiken von Rost und Ablagerungen sind ausgeschlossen. Garantiert lange Haltbarkeit und erhöhte Genauigkeit.

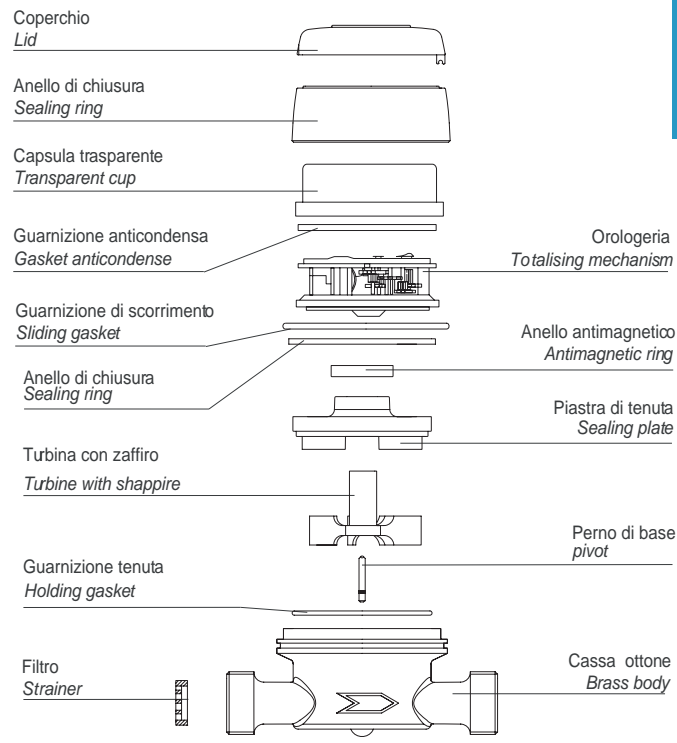
Mod. GSD8

Jet unique, cadran sec à lecture directe sur 8 rouleaux numériques, disponible en la version pour eau froide (30°C) ou eau chaude (90°C) et en 2 calibres 15 ou 20 mm (1/2" ou 3/4"), cadran orientable à 360°, exclus tous problèmes de corrosion et d'incrustation, fiabilité dans le temps et précision élevée.

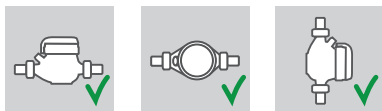
Mod. GSD8

Одноструйный счетчик с сухим квадрантом и прямым считыванием с 8 цифровых роликов. Выпускается в версиях для холодной (30°C) и горячей (90°C) воды диаметрами 15 и 20 мм (1/2" - 3/4"). Вращающийся на 360° циферблат. Исключены риски коррозии и образования осадка. Гарантия долговечности и высокой точности.

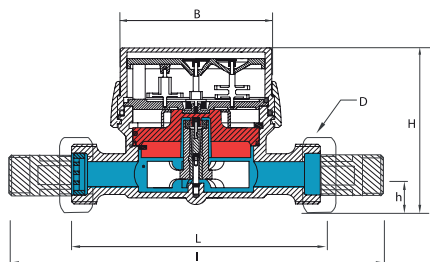
| Calibro Size | DN | mm in | 15 (1/2") | 20 (3/4") |
|--|---|-------------------|-----------|-----------|
| Portata di sovraccarico Q ₄ Overload flow rate | | m ³ /h | 3,12 | 5 |
| | Portata permanente Q ₃ Permanent flow rate | m ³ /h | 2,5 | 4 |
| R = 100H | Portata di transizione Q ₂ Transitional flow rate | l/h | 40 | 64 |
| | Portata minima Q ₁ Min flow rate | l/h | 25 | 40 |
| R = 160H | Portata di transizione Q ₂ Transitional flow rate | l/h | 25 | 40 |
| | Portata minima Q ₁ Min flow rate | l/h | 15,63 | 25 |
| Lettura minima Min reading | | l | 0,05 | |
| Lettura massima Max reading | | m ³ | 99.999 | |
| Pressione max ammissibile Max admissible pressure MAP | | bar | 16 | |



Posizione d'installazione
Installation position



Dimensioni e pesi - Dimensions and Weights



| Calibro Size | mm in | 15 (1/2") | 15 (1/2") | 15 (1/2") | 20 (3/4") | |
|--------------------------|-------------------------------|-----------|-----------|-----------|-----------|------|
| L | mm | 80 | 110 | 115 | 130 | |
| l | mm | 160 | 190 | 195 | 228 | |
| H | mm | 73 | 73 | 73 | 73 | |
| h | mm | 18 | 18 | 18 | 18 | |
| B | mm | 85 | 85 | 85 | 85 | |
| D Fillettatura Threading | mm | 3/4" | 3/4" | 7/8"-3/4" | 1" | |
| Pesi Weight | con raccordi with unions | kg | 0,60 | 0,65 | 0,70 | 0,85 |
| | senza raccordi without unions | kg | 0,45 | 0,50 | 0,55 | 0,60 |

Filettatura - Threading EN ISO 228-1:2000

Versione base - Basic version

- » MID R100-H 50-V 2004/22/CE
- » Disponibile in versione per acqua fredda 0°C-30°C e per acqua calda 30°C-90°C
- » Trasmissione magnetica
- » Lettura diretta su 8 rulli numeratori
- » Quadrante asciutto orientabile a 360°

- » MID R100-H 50-V 2004/22/CE
- » Available for cold water 0°C-30°C and for hot water 30°C-90°C
- » Magnetic transmission
- » Direct reading on 8 numeric rolls
- » Dry dial
- » 360° rotating dial

Su richiesta - Upon request

- » MID R160-H/R50-V
- » Predisposizione per montaggio sistema lancia-impulsi
- » Equipaggiato con sistema lancia-impulsi
- » Orologeria anti-condensa
- » Protezione anti frode magnetica
- » Coperchio

- » MID R160-H/R50-V
- » Prearranged for pulse emitter device mounting,
- » Equipped with pulse emitter device
- » Anti-condensation dial
- » Anti-magnetic fraud protection
- » Lid

