

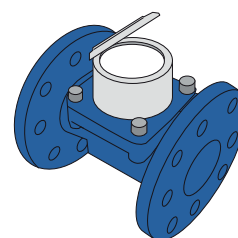
mod.

# IWM-MB4

Wired M-BUS module  
for Woltmann meters with inductive interface



Compatible water meters



mod. **WDE-K50**

The IWM-MB4 is suitable for remote reading applications in a commercial and industrial context. This M-BUS module allows the meter consumption data collecting by using the standard Wired M-BUS protocol, historically developed for remote meters reading.

The use of an inductive target into the meter dial excludes the possibility of magnetic fraud and makes the application insensitive to the pipes vibrations.

The IWM-MB4 is compatible with all the pre-equipped Woltmann meters and provides:

- Consumption analysis with reverse flow compensation.
- Fraud detection (removal of the module, external magnetic field tampering, reverse flow, water leakage). All the alarms are recorded and reported into the M-BUS telegram sent by the module.
- IP68 protection\* allows the installation of the module even in harsh environments.
- NFC interface allows configuration and commissioning of the device with the use of a simple smartphone app.

<b>Protocol</b>	MBUS EN13757-2\3
<b>Cable length</b>	1.5 meters
<b>Compatible water meters</b>	WDE-K50
<b>Sensitivity measure</b>	10 liters (up to DN125) or 100 liters (from DN150)
<b>Reverse flow</b>	Activate for the backward flow amount after user-settable threshold
<b>Energy supply</b>	Non-replaceable lithium battery, rechargeable (automatic recharge from the BUS network). Backup for measuring function in absence of BUS voltage
<b>Transmitted data</b>	Volume (consumption), alarms
<b>Alarms</b>	Discharged battery, module removal, magnetic fraud attempt, backward flow, leakage detection.
<b>Protection class</b>	IP68*
<b>Weight</b>	151 g
<b>Size (l x p x h, cable excluded)</b>	100 x 100 x 25 mm
<b>Working Temperature</b>	+1° / +55°C
<b>Module programming requirements</b>	<ul style="list-style-type: none"><li>• Android device (smartphone, tablet, etc.) with an NFC interface and the NFC IWM Config APP freely downloadable from GOOGLE PLAY.</li><li>• Any M-BUS level converter and Windows PC with B M-BUS software installed (or other M-BUS softwares**).</li></ul>

\* IP68: maximum 24 hours of continuous submersion at 1 m depth

\*\*Ask to your dealer about the software compatibility.