

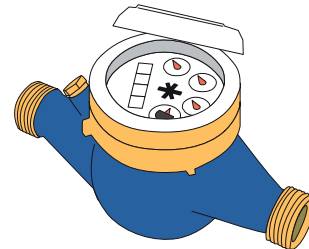
mod.

IWM-PL3

Electronic pulse emitter module
for multi jet meters with inductive interface



Compatible water meters



mod. **GMDM-I**
mod. **GMB-RP-I**
mod. **GMB-I**

The IWM-PL3 is suitable for remote reading applications in commercial and industrial sectors, acting as an electronic pulse-emitter. It allows the acquisition of the consumption of the counter by third-party systems with a universal interface and integrating advanced counting functions and fraud detections. The use of an inductive target on the meter dial excludes the possibility of magnetic fraud and makes the application insensitive to the pipes vibrations.

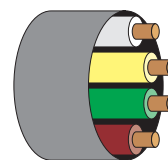
The IWM-PL3 is compatible with all the pre-equipped multiple jet meters (wet, semi-dry & dry dial) and allows:

- Consumption analysis (with incremental and decremental counting), Reverse flow compensation can be activated for having always perfect alignment between the totalizer and the meter.
- Checking frauds (cable cut and tampering, detection of external magnetic field application, reverse flow). The presence of reverse flow can be monitored with a dedicated impulse contact.
- Dedicated dosing function available for industrial applications.
- IP68 protection* allows the use of the module also for meters installed in difficult environments.
- NFC interface allows configuration and commissioning of the device with the use of a simple smartphone app (available ratio values K = 1, 5, 10, 25, 50, 100, 250, 500, 1000), and being able to configure the duration of the output pulse according to the sensitivity of the acquisition system.

Output signal	Supply: maximum 30VDC (100mA) Type: polarized open-collector
Cable length	1.5 meters (4 conductors)
Compatible water meters	GMDM-I, GMB-RP-I, GMB-I
Pulse output minimum value (K)	1 liter
Energy supply	Non-replaceable lithium battery, max lifetime 10 years*
Protection class	IP68**
Weight	122 g
Size (l x p x h, cable excluded)	88 x 69 x 28 mm
Working Temperature	+1° / +55°C
Module programming requirements	Android device (smartphone, tablet, etc.) with a NFC interface and the NFC IWM Config APP freely downloadable from GOOGLE PLAY

* The battery life strongly depends on the working time window, set during the configuration process, and on the environmental conditions.

** IP68: maximum 24 hours of continuous submersion at 1 m depth.



WHITE +
YELLOW +
GREEN +
BROWN -

White	Simple counting wire, NO contact Closes every index revolution, independently from the flow direction
Yellow	Fraud wire, NC contact, Opens at the following alarm conditions: - Module removal - Inductive target tampering - Cable cut - Magnetic tampering
Green	Third wire, NO contact, it can be assigned to one of the following features: - Absolute counting (closes every index revolution during forward flow, with backward flow revolution compensation) - Backward counting (closes every revolution during back flowing) - Dosing (closes every XX liter, with XX freely settable)
Brown	Ground (common wire)